

City of Bradenton WRF - Emergency Flow Redirection -

Scenario 1. Redirecting flow from Filter Station #1 to Parshall Flume and Chlorine Contact Chamber #3

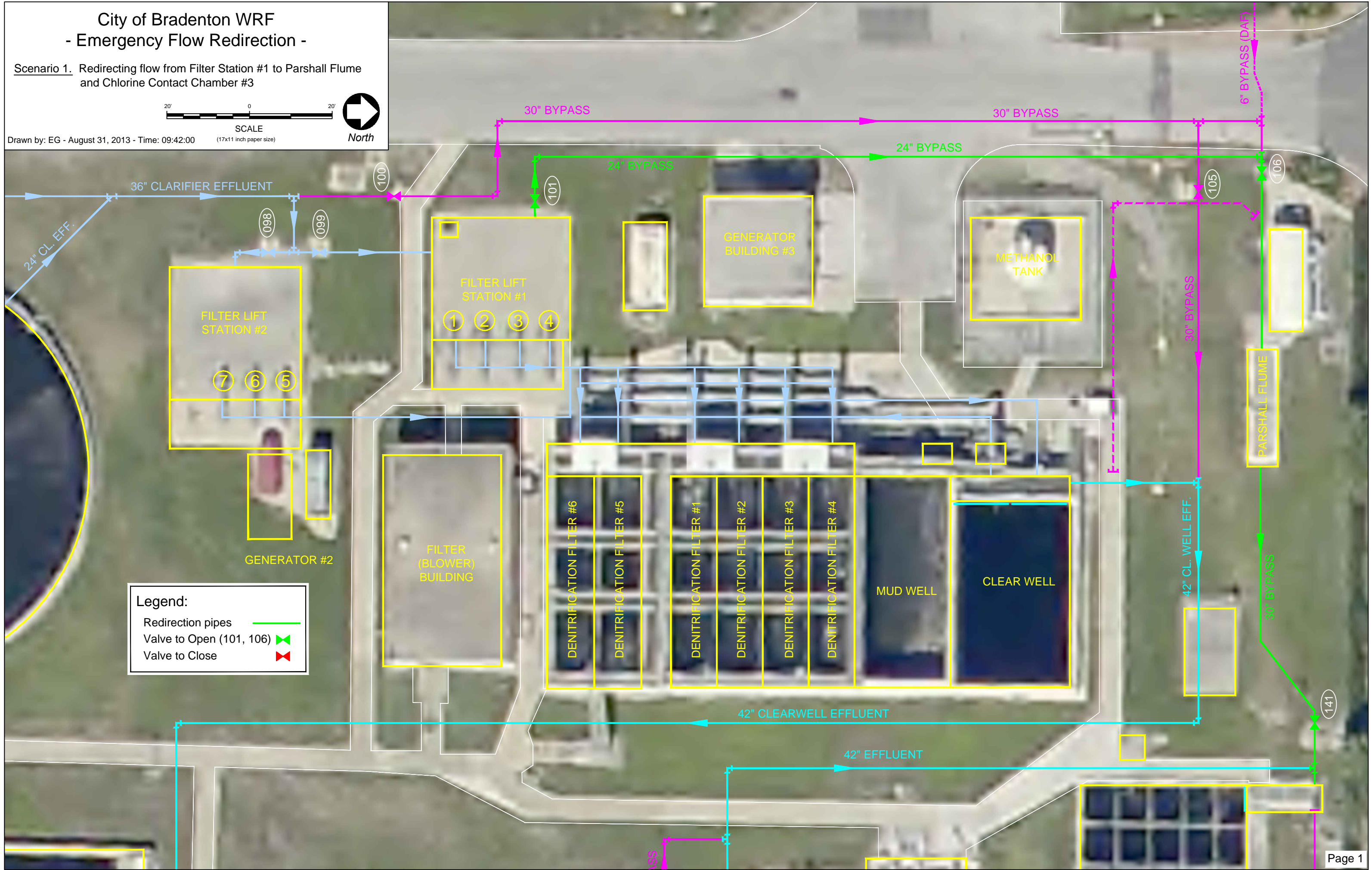


SCALE
(17x11 inch paper size)



North

Drawn by: EG - August 31, 2013 - Time: 09:42:00



Legend:

- Redirection pipes
- Valve to Open (101, 106)
- Valve to Close

City of Bradenton WRF - Emergency Flow Redirection -

Scenario 2. Redirecting flow from Clarifiers to Parshall Flume and Chlorine Contact Chamber #3, thus bypassing Filters.

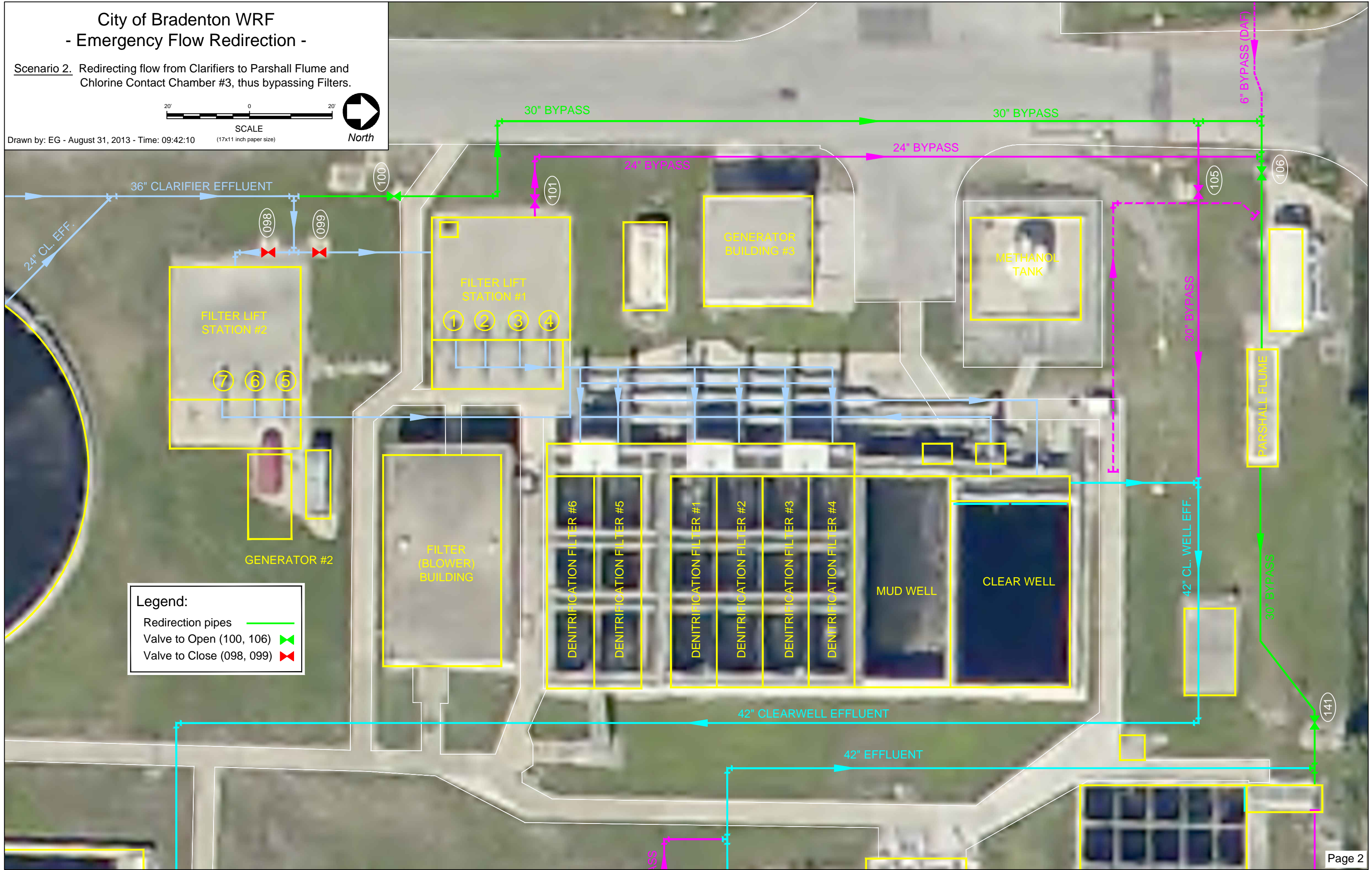


SCALE
(17x11 inch paper size)



North

Drawn by: EG - August 31, 2013 - Time: 09:42:10



Legend:

- Redirection pipes —
- Valve to Open (100, 106) ▶
- Valve to Close (098, 099) ▶

City of Bradenton WRF - Emergency Flow Redirection -

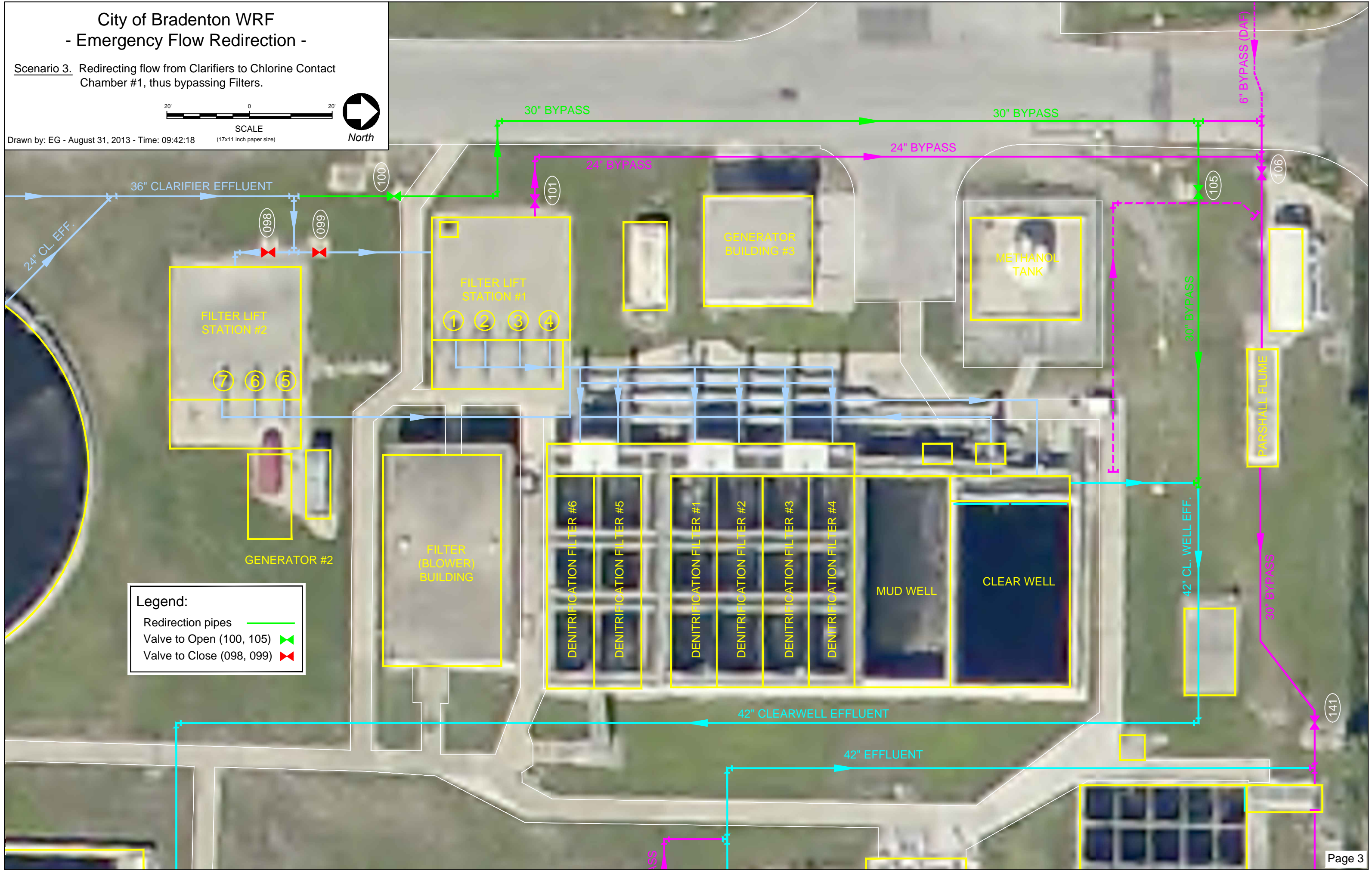
Scenario 3. Redirecting flow from Clarifiers to Chlorine Contact Chamber #1, thus bypassing Filters.



SCALE
(17x11 inch paper size)



Drawn by: EG - August 31, 2013 - Time: 09:42:18



Legend:

- Redirection pipes —
- Valve to Open (100, 105) ▶
- Valve to Close (098, 099) ✕

City of Bradenton WRF - Emergency Flow Redirection -

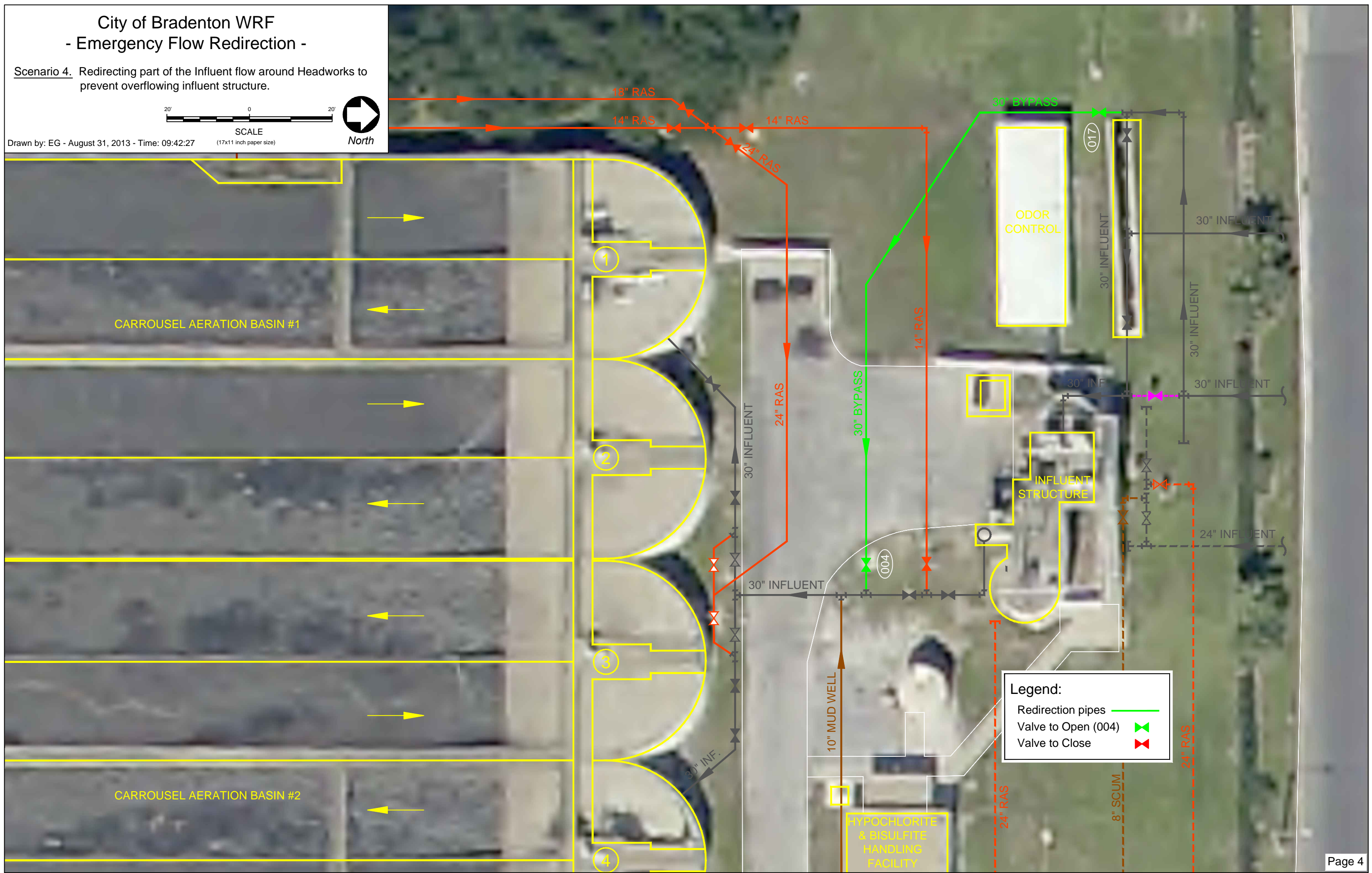
Scenario 4. Redirecting part of the Influent flow around Headworks to prevent overflowing influent structure.



SCALE
(17x11 inch paper size)



Drawn by: EG - August 31, 2013 - Time: 09:42:27



City of Bradenton WRF - Emergency Flow Redirection -

Scenario 5. Bypassing Chlorine Contact Chamber #1.

Scenario 6. Bypassing Chlorine Contact Chamber #2.



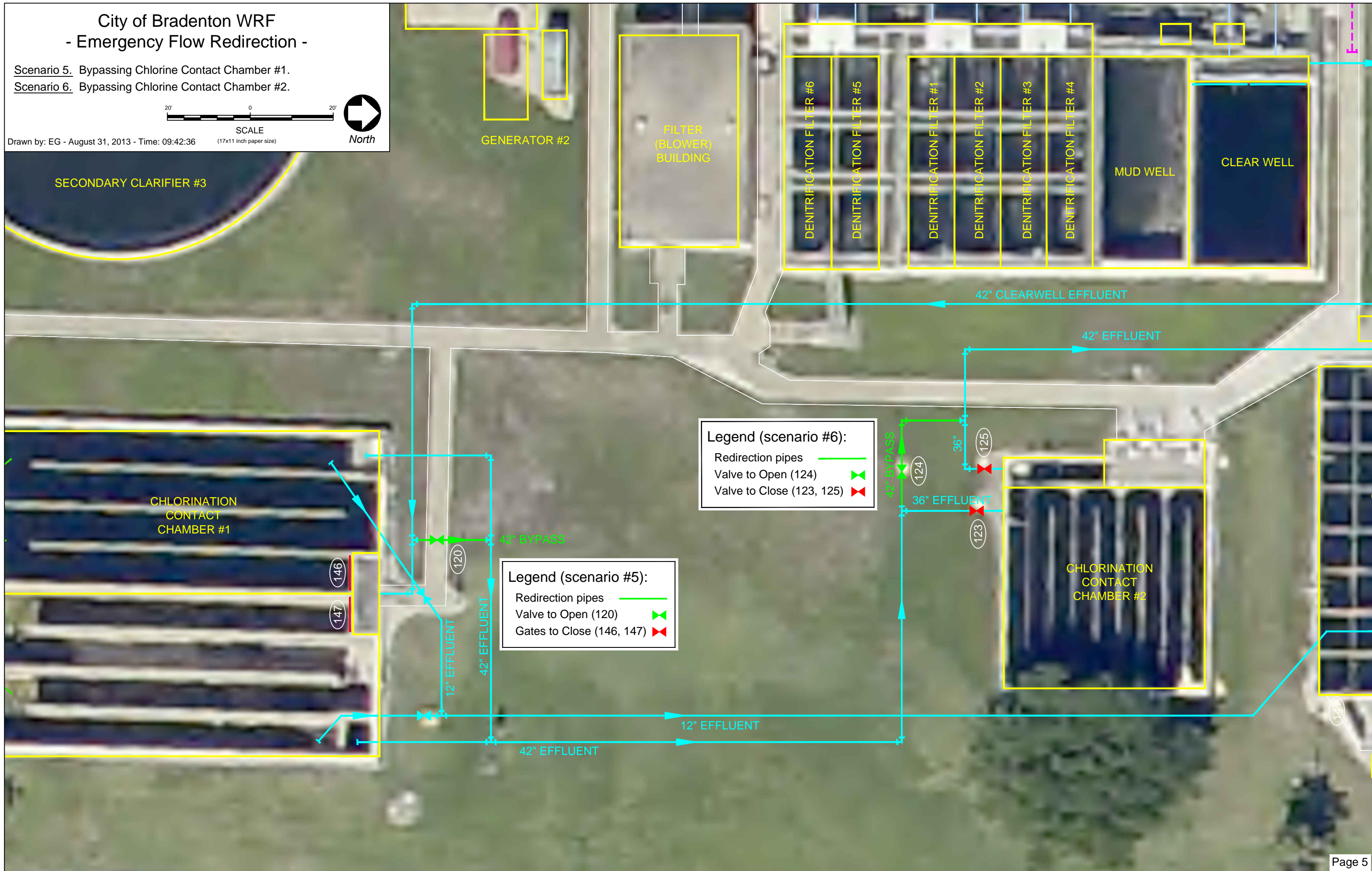
SCALE

(17x11 inch paper size)



North

Drawn by: EG - August 31, 2013 - Time: 09:42:36



Legend (scenario #6):

- Redirection pipes —
- Valve to Open (124) ⏏
- Valve to Close (123, 125) ⏏

Legend (scenario #5):

- Redirection pipes —
- Valve to Open (120) ⏏
- Gates to Close (146, 147) ⏏