

# Valves Inventory



SCALE  
(34x22 inch paper size)

City of Bradenton, FL  
Water Reclamation Facility

Note: Based on field observations, plans prepared by Wharton - Smith, Inc. - Year 1998, Smith & Gillespie Engineers, Inc. - Year 1997, and CoB WWTP Operations and Maintenance Manual by Smith & Gillespie Engineers, Inc. - Year 1991.

**Legend:**

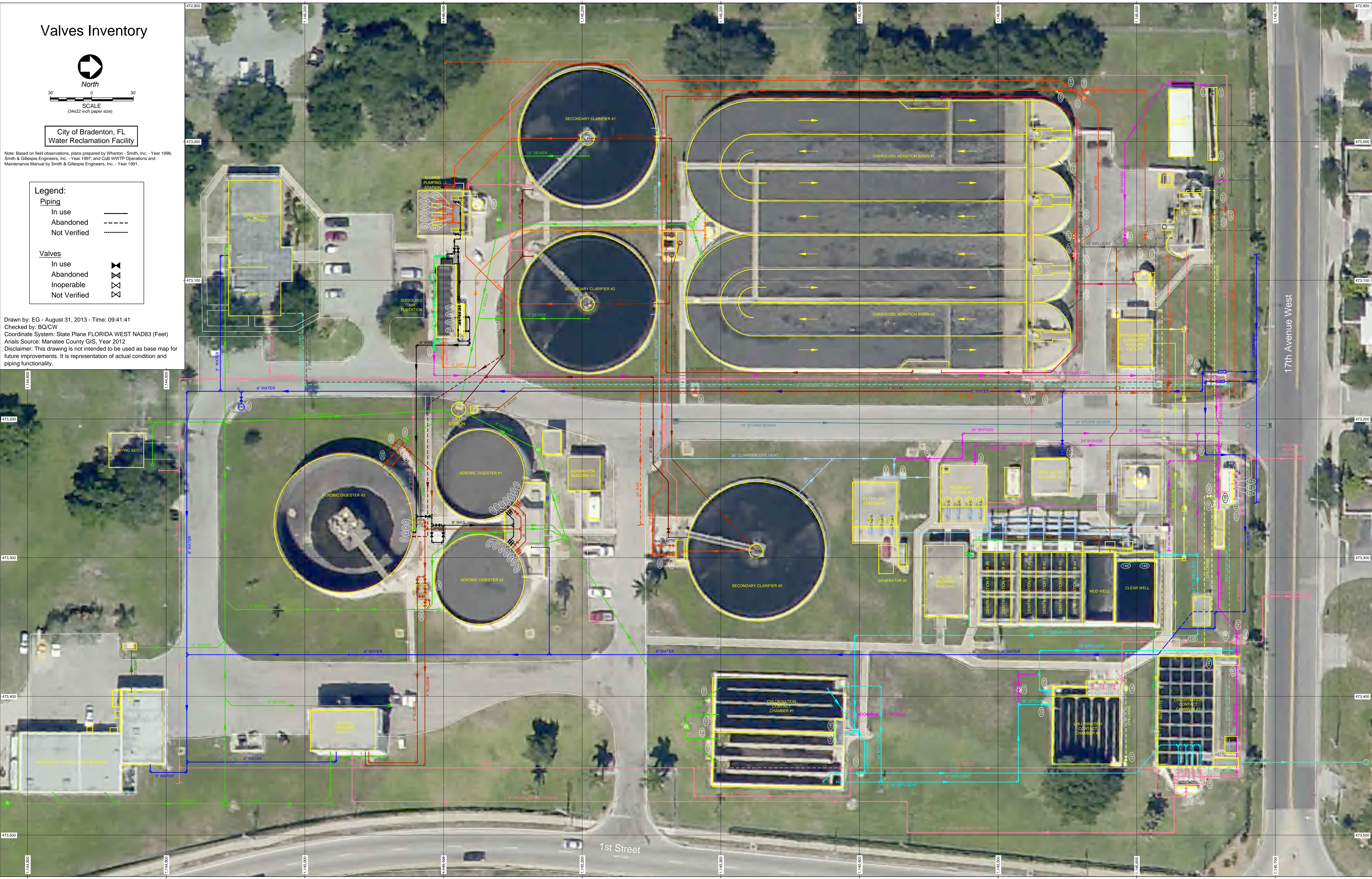
**Piping**

- In use ———
- Abandoned - - - - -
- Not Verified ·····

**Valves**

- In use —
- Abandoned —X—
- Inoperable —X—
- Not Verified —X—

Drawn by: EG - August 31, 2013 - Time: 09:41:41  
 Checked by: BQ/CW  
 Coordinate System: State Plane FLORIDA WEST NAD83 (Feet)  
 Aerial Source: Manatee County GIS, Year 2012  
 Disclaimer: This drawing is not intended to be used as base map for future improvements. It is representation of actual condition and piping functionality.



17th Avenue West

1st Street